

SPECIFICATION :

1. Electrical Char.

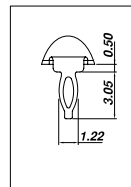
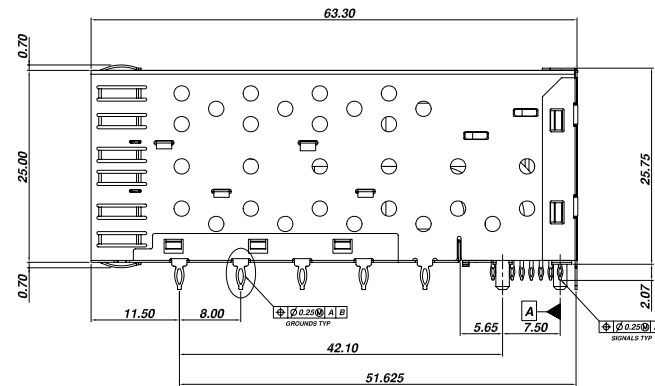
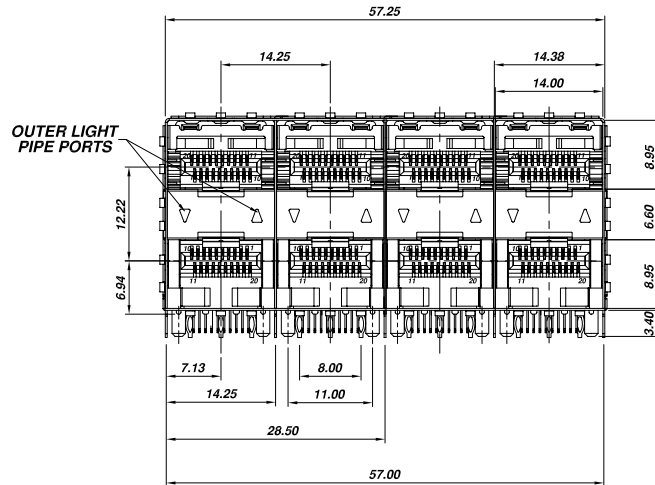
Low Level Contact Resistance :
 ΔR 10milli-Ohm Max. For Shield & Signal Contacts.
 Withstanding Voltage : 300V AC Max.
 Insulation Resistance : 1×10^5 Ohm Min.
 Rating Current : Signal Application Only.
 Rating Voltage : 120V AC.

2. Physical char.

Connector Housing : LCP (UL 94V-0) Black Color,
 Soldering Temperature: 235°C for 5 Sec.
 Moulded Inset : High Temperature Plastic (UL 94V-0) Black Color.
 Contact Mating Area : 0.20mm Thickness Phosphor bronze
 Gold Plating Over Nickel.
 Contact Needle Eye : 0.20mm Thickness Phosphor bronze
 Matte Tin Plating Over Nickel.
 Cage : Copper Alloy, T=0.25mm.
 Light Pipes : Polycarbonate. UL 94V-0, Clear Color.
 Light Pipe Housing : PBT Glass Filled (UL 94V-0), Black Color.
 Operation Temperature : - 40°C / +85°C
 Storage Temperature : - 55°C / +105°C

3. Mechanical Requirement:

Durability : 100 Mating cycles Min.
 Insertion & Extraction Force : 40N Max. & 11.5N Max.



ASFP-SN24-XO

Gold Plated 1 = 15u"
 2 = 30u"

ALLSUN CORPORATION
 9FL,NO.292 SEC.7 CHENG TEH ROAD.TAIPEI TAIWAN.
<http://www.allsun.com.tw>

TITLE

SFP 2x4 Press Fit Connector

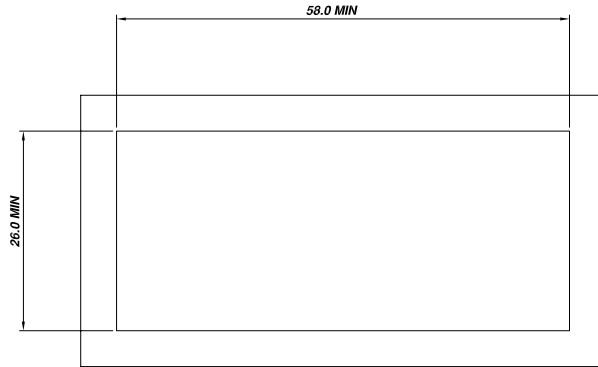
ASFP-SN24-XO

NOT SCALED DRAWING	TOLERANCE UNLESS OTHERWISE NOTICE	INCH	MM	DR.	DATE
 THIRD ANGLE PROJECTION	LINEAR	.00±0.01 .000±0.005 .0000±0.002	.00±0.25 .000±0.13 .0000±0.05	Steven CK'D	DEC-31 '13
	ANGLE +0° 30'	RADII	+0.45 -0.15	Johnn APP'D	DEC-31 '13
MM INCH				Billy	DEC-31 '13

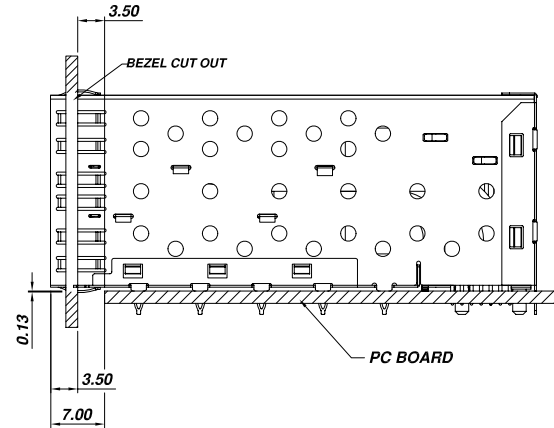
DWG. NO.

ASFP0A21-1

RoHS Compliant



BEZEL CUT-OUT CENTER SPACING DETAIL
BEZEL THICKNESS:0.8-2.6



ALLSUN CORPORATION
9FL,NO.292 SEC.7 CHENG TEH ROAD.TAIPEI TAIWAN.
<http://www.allsun.com.tw>

TITLE

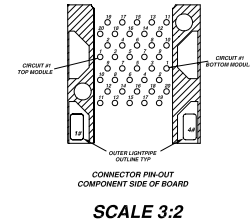
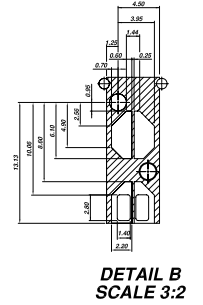
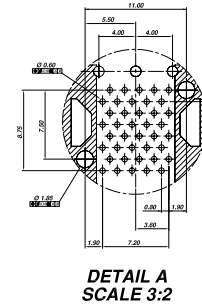
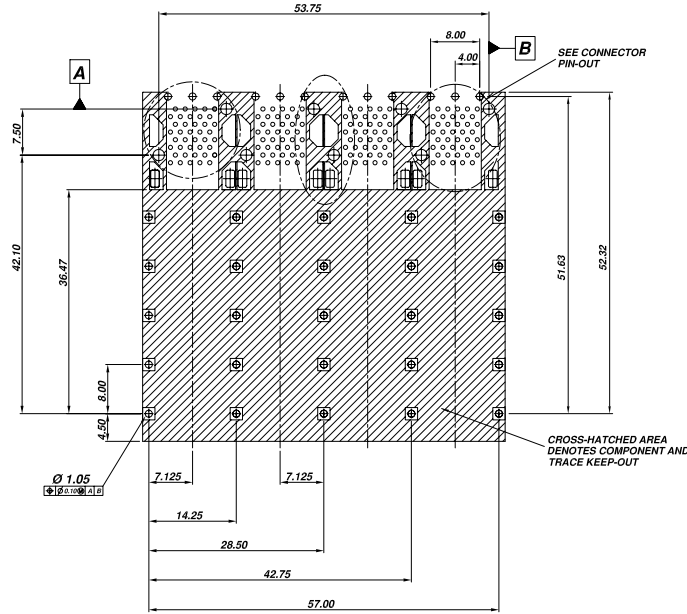
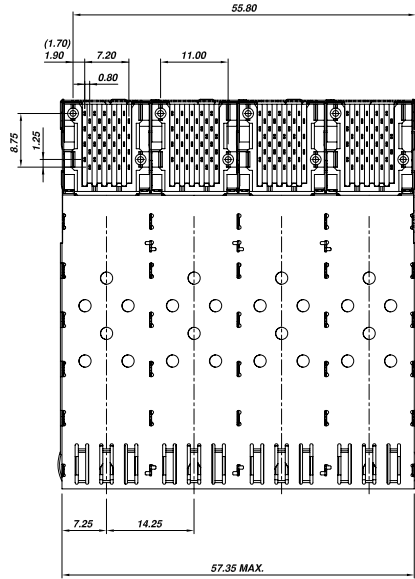
SFP 2x4 Press Fit Connector

ASFP-SN24-XO

NOT SCALED DRAWING	TOLERANCE UNLESS OTHERWISE NOTICE	INCH	MM	DR.	DATE
 THIRD ANGLE PROJECTION	LINEAR	$\frac{MM}{INCH}$	$.00\pm0.01$ $.000\pm0.005$ $.0000\pm0.002$	<i>Steven</i> CK'D <i>Johnn</i> APP'D <i>Billy</i>	DEC-31 '13
	ANGLE +0° 30'	RADII	+0.45 -0.15		DEC-31 '13

DWG. NO.

ASFP0A21-1



ALLSUN CORPORATION
9FL,NO.292 SEC.7 CHENG TEH ROAD.TAIPEI TAIWAN.
<http://www.allsun.com.tw>

TITLE

SFP 2x4 Press Fit Connector

ASFP-SN24-XO

NOT SCALED DRAWING	TOLERANCE UNLESS OTHERWISE NOTICE	INCH	MM	DR.	DATE
THIRD ANGLE PROJECTION	LINEAR	$.00 \pm 0.01$	$.00 \pm 0.25$	<i>Steven</i>	DEC-31 '13
		$.0000 \pm 0.005$	$.0000 \pm 0.13$	<i>Johnn</i>	DEC-31 '13
	ANGLE +0° 30'	RADII	+0.45 -0.15	<i>Billy</i>	DEC-31 '13

DWG. NO.

ASFP0A21-1